

35 Queens Parade CLIFTON HILL, VIC

PREMIER CLIFTON HILL FREEHOLD

Dawson Real Estate and Stevenson Real Estate are pleased to offer one of Clifton Hill's premier freehold commercial property for sale by Expressions of Interest.

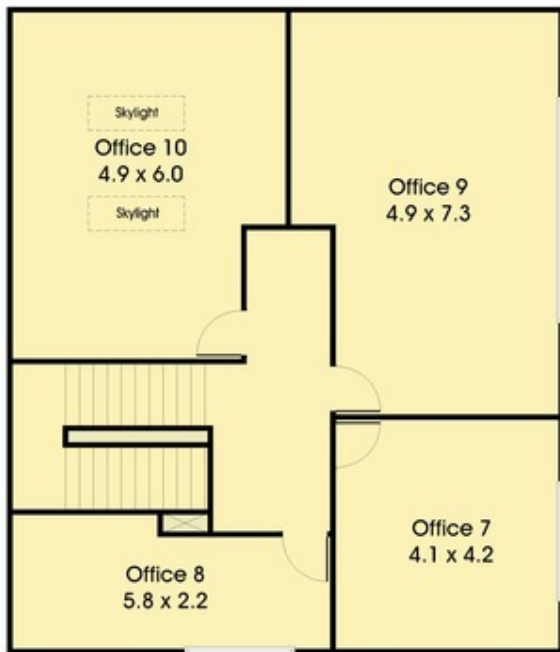
This rather rare property is situated only 4km from the Melbourne CBD, 1 km from the Clifton Hill Station, and is located within the Clifton Hill village.

Suitable for occupation or development, keys highlights are:

- ? Land area 492sqm
- ? Suitable for a variety of uses including commercial, medical and residential (STCA)
- ? Impressive building with on-site parking
- ? Commercial 2 Zoning

Ben Dawson

0418 850 031



FIRST FLOOR



GROUND FLOOR

DAWSON
REAL ESTATE

35 Queens Parade

CLIFTON HILL, VIC

Dimensions are approximate measurements; we cannot guarantee its accuracy. No liability will be accepted for any misinformation