



11/1020 Doncaster Road DONCASTER EAST, VIC

EXECUTIVE OFFICE SUITE

- ? 236sqm*
- ? Self Contained
- ? Quality fit out
- ? Exceptional Views
- ? Basement Parking

This quality executive office suite is situated on Level 1, on the south east corner.

It comprises an area of approx 236sqm*, is fully self contained, includes basement parking and is fit out to exceptional standards.

Situated in this prime position, there is excellent access to major arterials including Doncaster Road, Blackburn Road, Springvale Road and the Eastern Freeway. It is easily accessible by surrounding bus services and is close to Tunstall Square, specialty shops & cafes

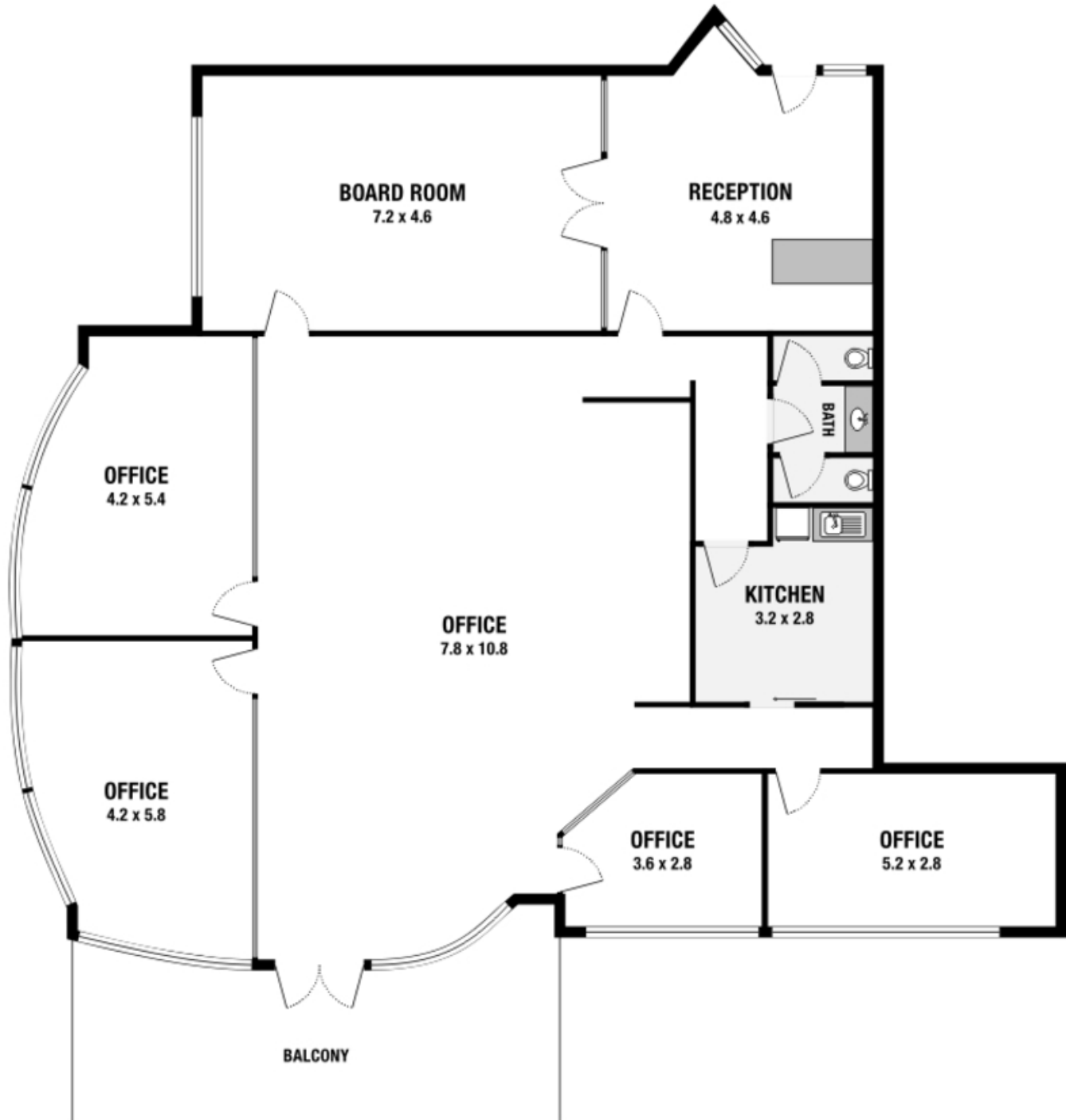
Ben Dawson

0418 850 031

Adam Foley

0411 700 915

11/1020 Doncaster Road, Doncaster East



DAWSON
REAL ESTATE

11/1020 Doncaster Road

DONCASTER EAST, VIC

Please note: All stated dimensions are approximate only. Particulars given are for general information only and do not constitute any representation on the part of the vendor or agent.